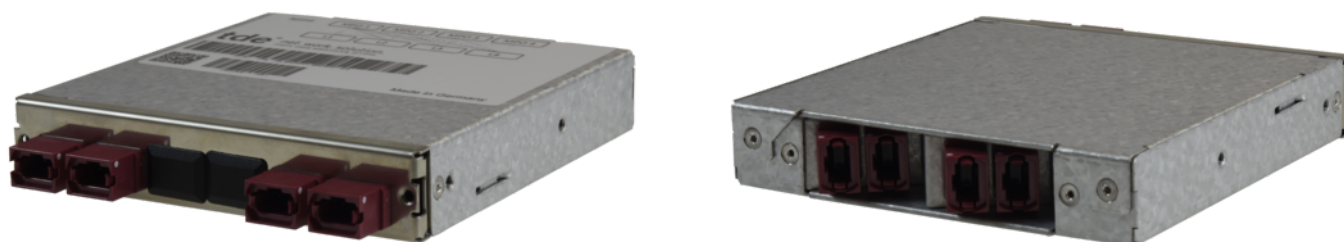


tML[®] - FO Spine Leaf Mesh Module 4x MPO/MTP[®] with Pins/4x MPO/MTP[®] with Pins 50/125µ OM4



tML[®] - tde Modular Link

tML[®] is a patented, modular cabling system consisting of the three key components module, trunk cable and rack mount enclosure. The system components are 100 percent manufactured, pre-assembled and tested in Germany. They enable plug-and-play installation on site – especially in data centres, but also in industrial environments – within the shortest possible time. Heart of the system are the rear MPO/MTP[®] and Telco connectors, which can be used to connect at least six or twelve ports at a time. Depending on the module configuration, transfer rates of up to 200G are currently possible with SR4. The fibre optic and TP modules can be used together in a module carrier with a very high port density. The tde offers its tML[®] cabling system as a proven tML[®] standard system and in the highly innovative variants tML[®] Xtended, tML[®] 24 System and now tML[®] 32 System for extreme scalability and very easy migration to higher transmission rates such as 40G, 100G, 200G and 400G.

The tML[®] FO Spine Leaf Mesh Module is intended for the installation in the tML[®] Rack Mount Enclosure 1U (for 8 x Modules).



tde[®] trans data elektronik GmbH

Headquarter address:

Lingener Str. 2
D-49626 Bippen/Ohrte
Tel.: +49 5435 9511 0
Fax.: +49 5435 9511 32

Sales office address:

Prinz-Friedrich-Karl-Str. 46
D-44135 Dortmund
Tel.: +49 231 8805 61 13
Fax.: +49 231 8805 61 15

info@tde.de | www.tde.de

tML® - FO Spine Leaf Mesh Module 4x MPO/MTP® with Pins/4x MPO/MTP® with Pins 50/125µ OM4

Technical Data

The end faces of the connectors are optimized by means of Lasercleaving and machine polish. The MPO/MTP® plug has a defined fiber height of 1 - 3.5µ. The max. adjacent fiber height difference is 0.2µm and for all fibers 0.3µm. All system components (modules, trunk cables and patch cords) are co-ordinated for the reaching of the performance particularly. The module is marked with sequential serial number and article number. The modules are ROHS compliant.

Entry	4 x MPO/MTP® Male Adapter (magenta) rear
Exit	4 x MPO/MTP® Male Adapter (magenta) front
Tests	Interferometer, Insertion Loss, Return Loss and Visual Final Inspection; all measured values are electronically archived
	QS-Managementsystem ISO 9001, ISO 14001 and TL 9000

Box	Galvanized steel sheet
Front Panel	Stainless steel
Dimensions	110 x 108 x 20 mm

FO Adapters

Type	MPO/MTP®
Application	Multimode OM4
Design	without Flange
Connector style	SC Simplex
Key Orientation	Type A, Key up/down
Color	Magenta
Material	Plastic
Sleeve	--
Shutter	--
Standards	IEC 61754-7 TIA 604-5
Manufacturer	US Conec

FO Connectors

The end faces of the connectors are optimized by means of Lasercleaving and machine polish. The MPO/MTP® plug has a defined fiber height of 1 - 3.5µ. The max. adjacent fiber height difference is 0.2µm and for all fibers 0.3µm.

Connector

Type	MPO/MTP® Male Push Pull Locking with Elite Pins (magenta)
Ferrule	12 Fiber MM Elite® ferrule, PPS
Boot colour	Black
Manufacturer	tde/US Conec

tML[®] - FO Spine Leaf Mesh Module 4x MPO/MTP[®] with Pins/4x MPO/MTP[®] with Pins 50/125 μ OM4

Optical Performance

Fiber	Type	Wavelength	Insertion loss typ.	Insertion loss max.	Return loss min.
50/125 μ OM4	MPO/MTP [®]	850 / 1300 nm	≤ 0.12 dB	0.25 dB	35 dB

FO Fiber

Type	Corning ClearCurve [®] 50/125 μ OM4 multimode fiber
Optimized Data Rate over Distance	40/100 Gb over 170 m* 10 Gb/s over 550 m 1 Gb/s over 1100 m
Standard Compliance	ISO/IEC 11801: type OM4 fiber** IEC 60793-2-10: type A1a.3 fiber** TIA/EIA: 492AAAD ITU: ITU G651.1
*	Distances specified in the 40G/100G per IEEE 802.3ba standard are 150m on OM4 and 100m on OM3; Corning fibers are manufactured to tighter dispersion specifications and thereby support the extended distances shown in the table (assuming cable attenuation ≤ 3.0 dB/km and same 1.0 dB of connector loss for OM3 that the standard requires for OM4)
**	Assumes IEC draft standard is harmonized with 492AAAD which was approved by TIA

Optical Specifications

Bandwidth	High Performance EMB* (MHz.km): 4700 at 850 nm only Legacy Performance EMB** (MHz.km): 3500 at 850 nm / 500 at 1300 nm
Attenuation	At 850 nm max. ≤ 2.3 dB/km At 1300 nm max. ≤ 0.6 dB/km
Macrobend Loss	Mandrel Radius (mm): 37.2 / 15 / 7.5 Number of Turns: 100 / 2 / 2 Induced Attenuation (dB) at 850 nm: ≤ 0.05 / ≤ 0.1 / 0.2 Induced Attenuation (dB) at 1300 nm: ≤ 0.15 / ≤ 0.3 / ≤ 0.5
Numerical Aperture	0.200 ± 0.015
*	Ensured via miniEMBc, per TIA/EIA 455-220A and IEC 60793-1-49, for high performance laser-based systems (up to 10Gb/s)
**	OFL BW, per TIA/EIA 455-204 and IEC 60793-1-41, for legacy and LED-based systems (typically up to 100 Mb/s)

Dimensional Specifications

Core Diameter	50.0 ± 2.5 μ m
Cladding Diameter	125.0 ± 1.0 μ m
Core-Clad Concentricity	≤ 1.5 μ m
Cladding Non-Circularity	$\leq 1.0\%$
Core Non-Circularity	$\leq 5.0\%$
Coating Diameter	242 ± 5 μ m
Coating-Cladding Concentricity	< 12 μ m

tML® - FO Spine Leaf Mesh Module 4x MPO/MTP® with Pins/4x MPO/MTP® with Pins 50/125µ OM4

Environmental

Environmental Test	Test Condition	Induced Attenuation 850 nm & 1300 nm (dB/km)
Temperature Dependence	-60°C to +85°C	≤ 0.10
Temperature Humidity Cycling	-10°C to +85°C and 4% to 98% RH	≤ 0.10
Water Immersion	23°C ± 2°C	≤ 0.20
Heat Aging	85°C ± 2°C	≤ 0.20
Damp Heat	85°C at 85% RH	≤ 0.20
Operating Temperature Range	-60°C to +85°C	

Mechanical Specifications

Proof Test	The entire fiber length is subjected to a tensile stress ≥ 100 kpsi (0.7 GN/m²).
Length	Fiber lengths available up to 17.6 km/spool.

Performance Characterizations

Refractive Index Difference	1%
Effective Group Index of Refraction	850 nm: 1.480 1300 nm: 1.479
Fatigue Resistance Parameter (nd)	20
Coating Strip Force	Dry: 0.6 lbs (2.7N) Wet: 14 days in 23°C water soak: 0.6 lbs (2.7N)
Chromatic Dispersion	Zero Dispersion Wavelength (λ_0): 1295 nm $\leq \lambda_0 \leq$ 1315 nm Zero Dispersion Slope (S_0): ≤ 0.101 ps/(nm²*km)

Product variants & accessories

Art.-No.	Description
TML-SLO4MPP/04MPP-G4	tML® - FO Spine Leaf Mesh Module 4x MPO/MTP® with Pins/4x MPO/MTP® with Pins 50/125µ OM4