

Secure Tamper Proof LC Connectivity



SLC Connectivity

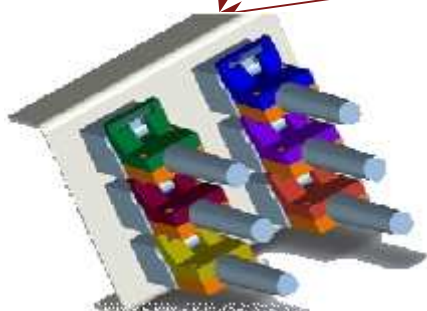
Locks to prevent un-authorized change

- Uni-Body Duplex LC licensed design for SM & MM cables
- Compact form factor for highest density patching
- RFID Tag compatible – asset management and intelligent patching
- Push to latch and lock – secured and tamper proof
- Key system on extraction tools prevents unauthorized de-mates
- Uses standard duplex and quad LC adaptors
- Unique Dust – cap design ‘disciplines’ fiber connector end face protection

8 x Color coded key configurations

Push to plug and 'lock'

Meets 88 port
& Quad adaptor density

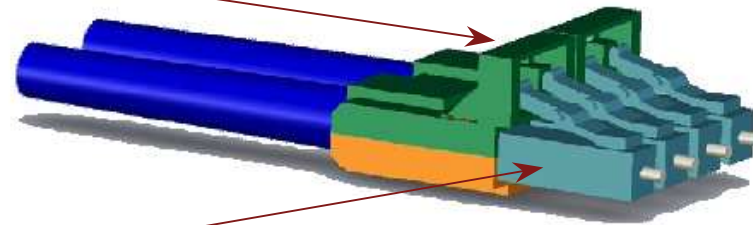


Competitor keyed LC's only prevent connection to an unassigned port They do not prevent unauthorized change

tde's SLC prevents change

SLC Connectivity

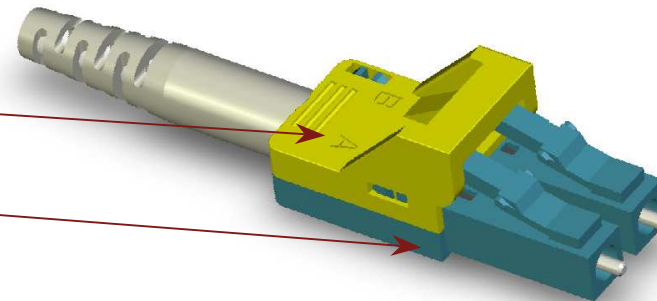
Tamper Proof - 'Shield' prevents unplugging without extraction tool



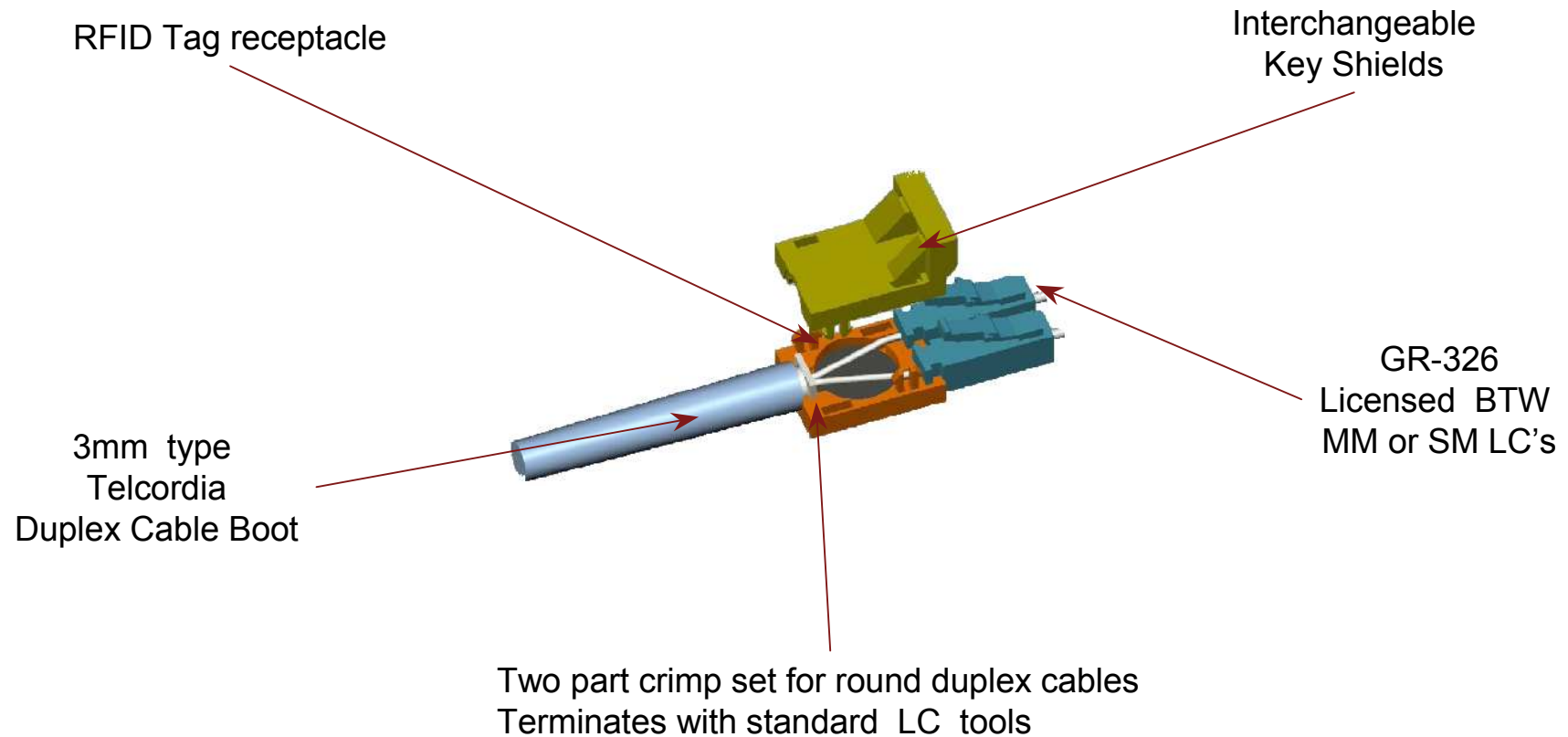
Small form factor
suitable for Quad adaptors

8+ Key coded Shields

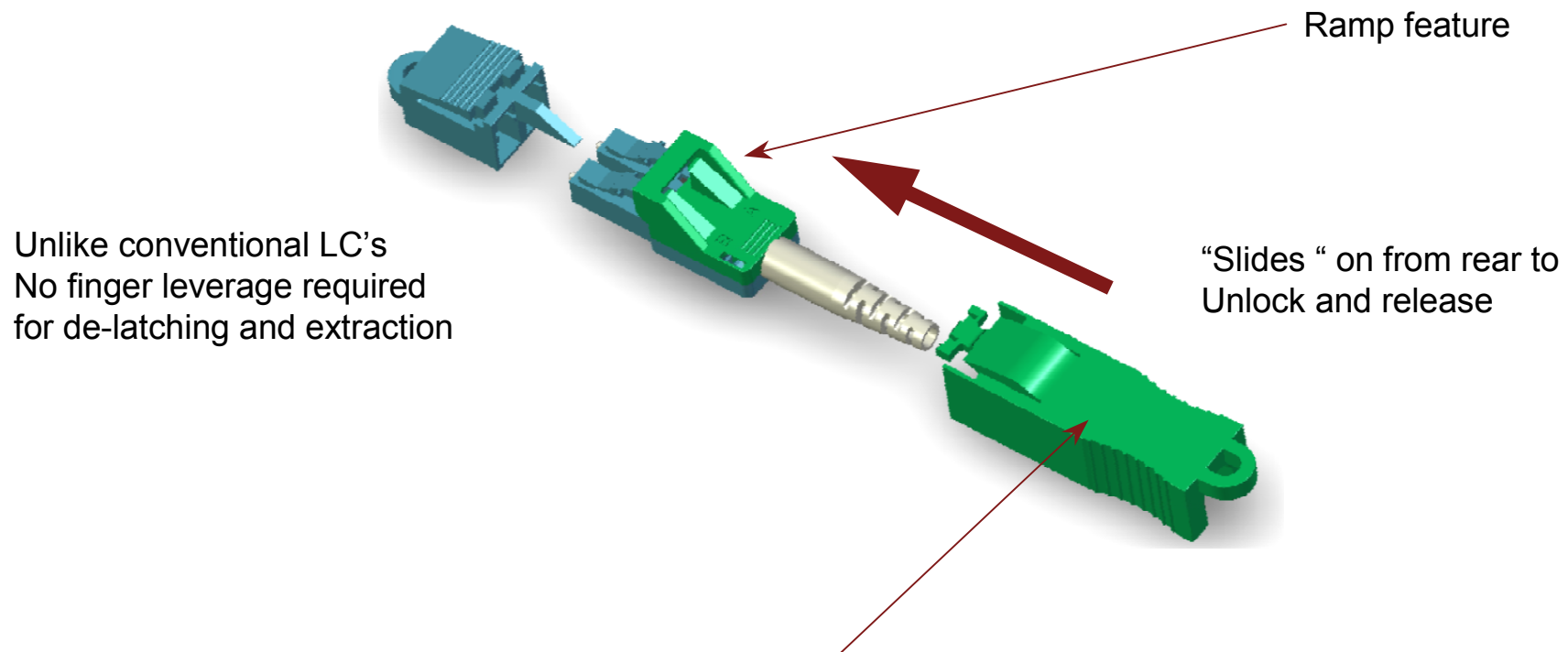
Common base component



SLC Connectivity

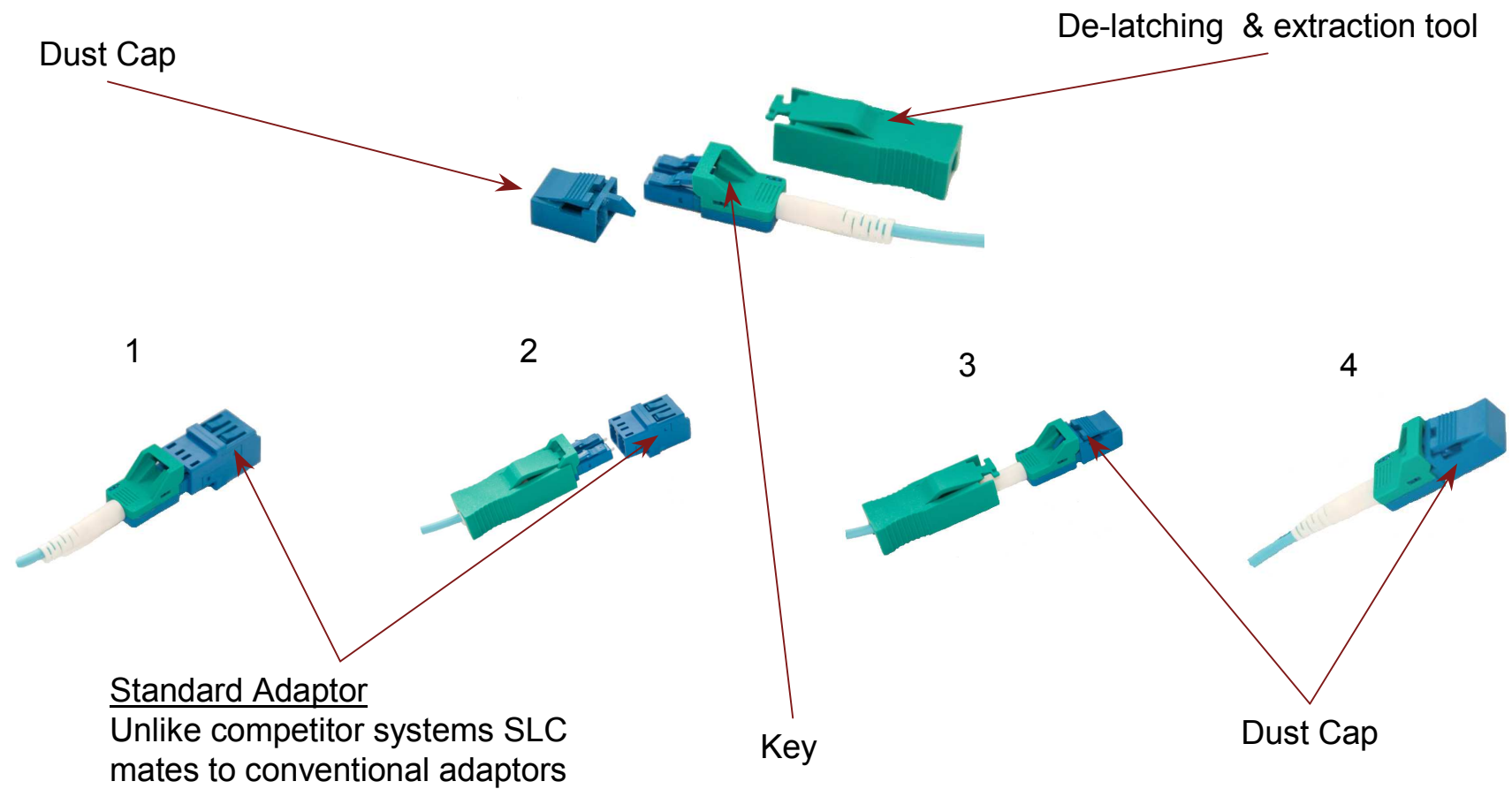


SLC Connectivity

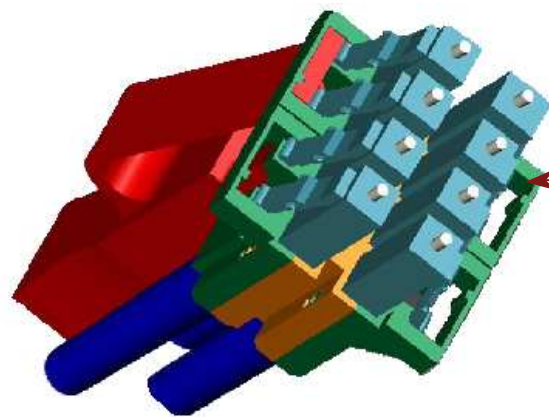


Keyed Extraction tool color coded allows easy extraction from high density panels and 'Quad' adaptors without damage to surrounding connectors

SLC Connectivity



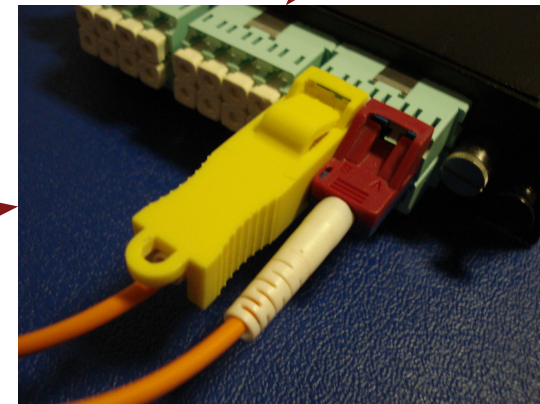
SLC Connectivity



High density lateral
and vertical packing

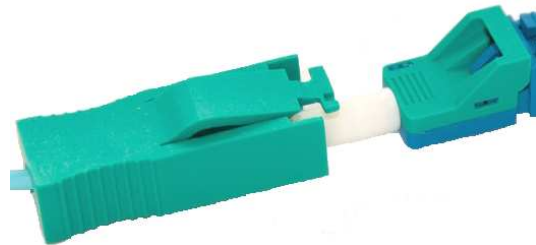
Keyed extraction tool
for precision access

Tool arm applies correct
Lever force for de-latch



SLC Connectivity

Enhances connector protection practices



Connector has to be
Capped to remove extraction tool

Unique Dust Cap
Eliminates open connector
faces

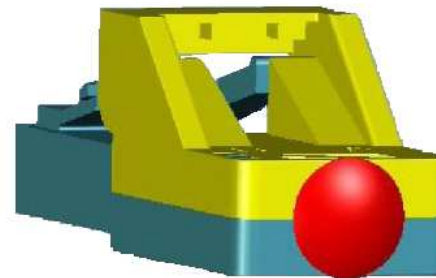
Patented design
de-latches extraction tool



SLC Connectivity

Locking Port Protector

8x color coded keyed options



Administrator
Extraction Tool



SLC Connectivity



Connector Property	Singlemode	Multimode
Insertion Loss	0.10dB typical	0.20dB typical
Return Loss	≥ 55dB typical for UPC	
Durability	< 0.2dB typ. change 500 mating cycles	
Operating Temperature	-40°C to +70°C	
Ferrule Criteria	125.5µm +1/-0 Concentricity: ≤ 1µm	127µm

RoHS Directive Compliant .Conforms to GR-326. Flammability: UL 94 V-0 Grade

