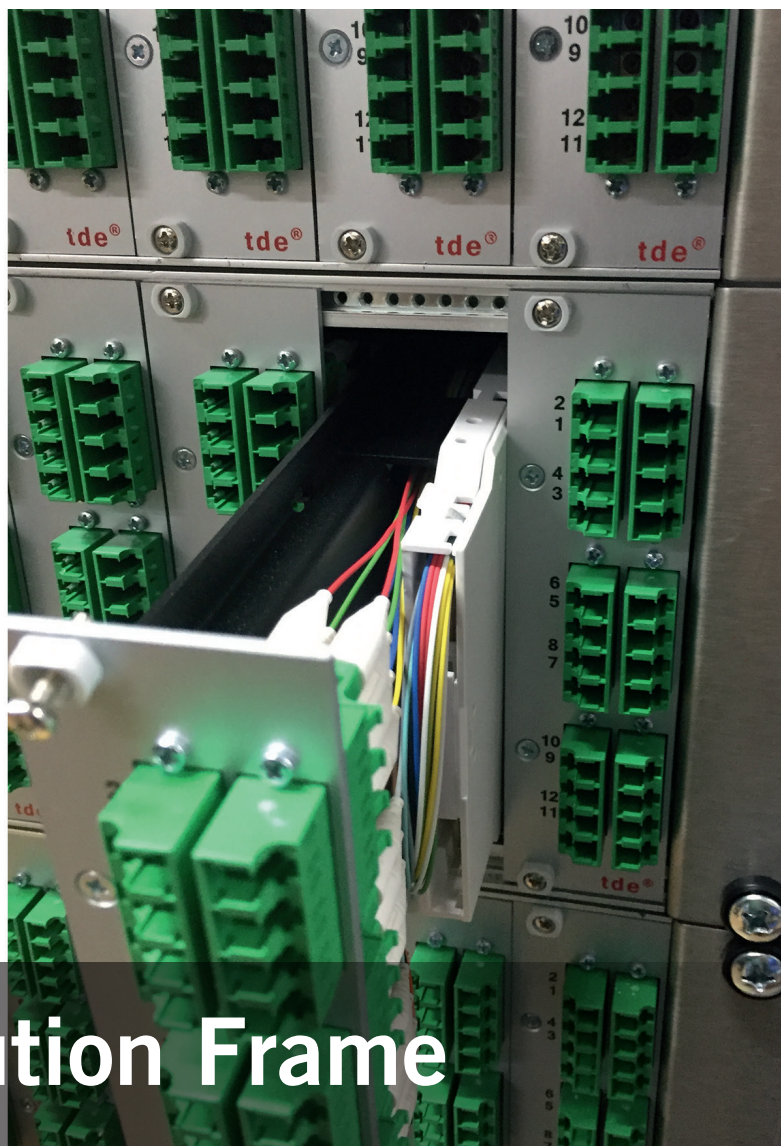
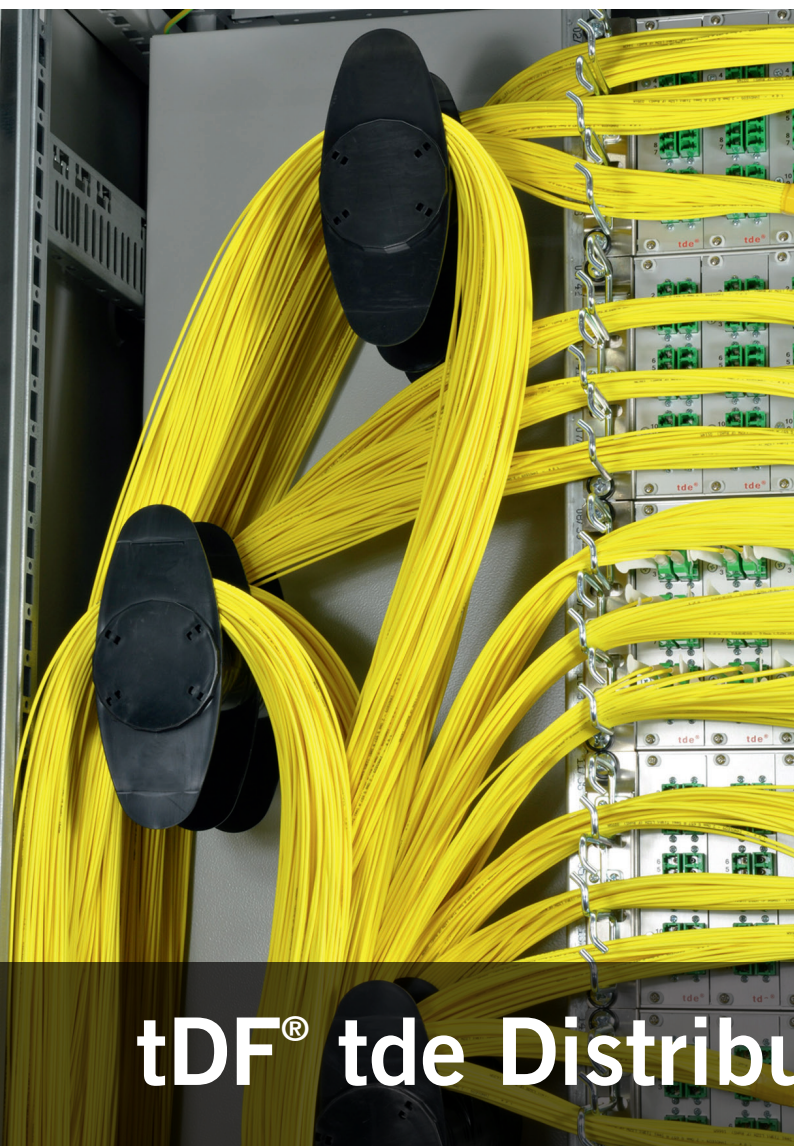


# tde<sup>®</sup>

trans data elektronik GmbH

net.work.solution. made in Germany

ISO 9001  
TL 9000  
ISO 14001



## tDF<sup>®</sup> tde Distribution Frame

Modular „Central Office“ Solution





## tDF® tde Distribution Frame

tDF® is a modular Central Office solution with the highest packing density. At 46U, up to 4032 fibers can be terminated with LC. In developing the tde has taken primarily attention on the user-friendly installation. So the patented modules are fully be fitted from the front. A 19-inch sub rack occupies three height units and is equipped with twelve splice modules. Per sub rack, up to 288 fibers can be terminated with LC. The splices will be stored in standard splice cassettes. A unique feature of the splice module is the built-in loose tube over length management, which compared to conventional solutions saves an additional rack unit for the over length tray. The trunk cables are brought to the sub rack side and splitted there. This results in very short stripping lengths for the trunk cables. Due to the tML® compatibility also MPO/MTP® modules can be equipped in the same sub rack. The modular design of the tDF® rack system offers maximum flexibility. The racks can be ordered customized completely preconfigured.



Integrated loose tube  
over length management



Fan-out near the  
assembly



Splice table

### Product features

- > Up to 4032x FO splices on 46U
- > Up to 288x FO splices tde tDF®-sub rack
- > tDF® sub rack has a height of 3U
- > tDF® sub rack can be equipped with up to 12 x tDF® splice modules.
- > Integrated loose tube over length management in the tDF® splice module
- > tDF® splice modules with all common connectors like E200, LC, SC und MPO/MTP available
- > tDF® splice modules available for splicing through
- > Short stripping lengths thanks to the fan-out unit of the trunk cable close to the subrack
- > Different cable diameters are supported
- > Easily expandable with cabinet connector sets
- > Standard 19" grid struts
- > Rack can be completely dismantled
- > Cable entry from above and below
- > Splice table available for the rack



tDF® Sub Rack + Accessories

tDF® Sub Rack



Description	Part Number
19"/3U/84HP w. loose tube management f. 6,4mm flex tube	TDF-SR-3U-BP
19"/3U/84HP m. tube management f. 5mm flex tube	TDF-SR-3U-BP-UNI

tDF® FO cable fan-out



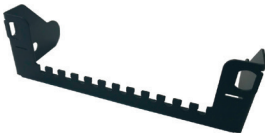
Description	Part Number
complete unit 3U 12-fold for 6,4mm flex tube	TDF-FAN-OUT-3U-6.4
complete unit 3U 24-fold for 5mm flex tube	TDF-FAN-OUT-3U-5

tDF® Cable guide holder



Description	Part Number
metal, 3-fold	TDF-3U-CR-3

tDF® FO flex tube holder



Description	Part Number
3U 12-fold for 6,4mm	TDF-FT-HOLDER-3U-6.4
3U 24-fold for 5,0mm	TDF-FT-HOLDER-3U-5

tDF® Module Blind Plate



Description	Part Number
Module Blind Plate 7HP	TDF-T-BLIND

tDF® Flex tube

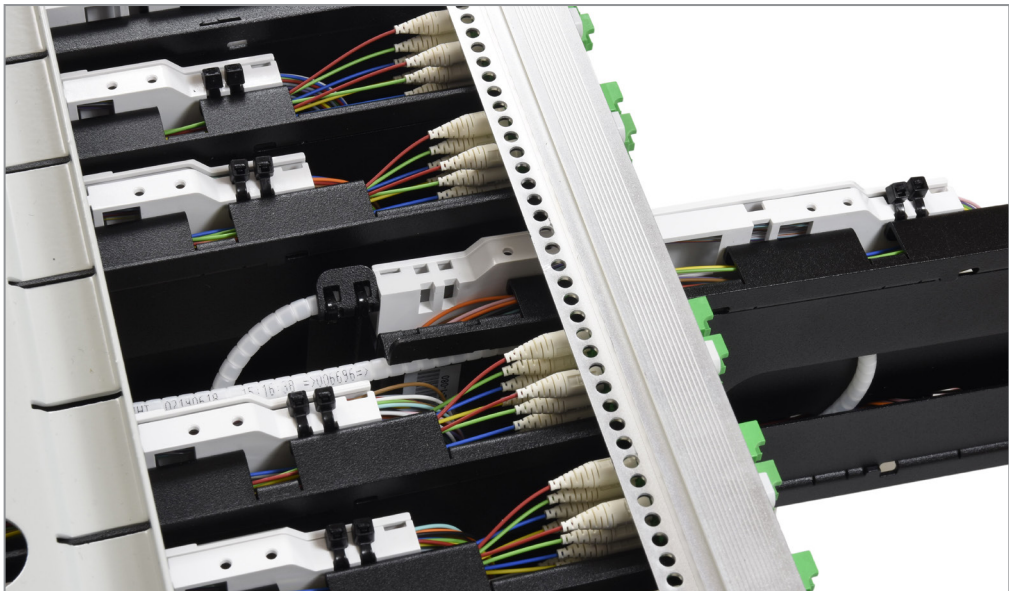


Description	Part Number
6,4mm, Length: 50m	TDF-FLEX-TUBE
5mm, Length: 50m	TDF-FLEX-TUBE-5

tDF® Distance adapters



Description	Part Number
32mm	TDF-3U-AD-32



Integrated loose tube over length management

tDF® FO Splice Modules 7HP

6x LC Duplex



Fiber	Part Number
9/125μ	TDF-M06-06LCD9x1 S-y²
9/125μ	TDF-M06-06LCD9x1 S-y²
50/125μ OM3	TDF-M06-06LCD50-3x1 S-y²
50/125μ OM4	TDF-M06-06LCD50-4x1 S-y²

12x LC Duplex



Fiber	Part Number
9/125μ	TDF-M06-06LCQ9x1 S-y²
9/125μ	TDF-M06-06LCQ9x1 S-y²
50/125μ OM3	TDF-M06-06LCQ50-3x1 S-y²
50/125μ OM4	TDF-M06-06LCQ50-4x1 S-y²

12x E2000



Fiber	Part Number
9/125μ	TDF-M12-12E2-9x1 S-y²
9/125μ	TDF-M12-12E2A9x1 S-y²

12x SC Simplex



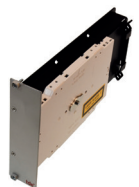
Fiber	Part Number
9/125μ	TDF-M12-12SC9x1 S-y²
9/125μ	TDF-M12-12SCA9x1 S-y²

6x SC Duplex

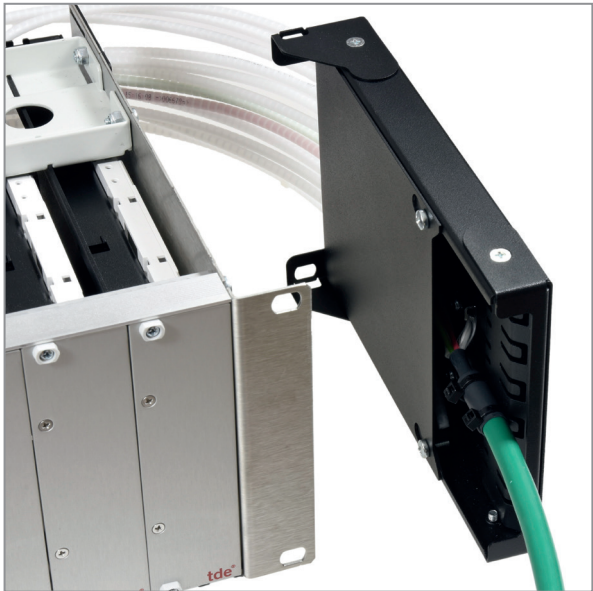


Fiber	Part Number
9/125μ	TDF-M06-06SCD9x1 S-y²
9/125μ	TDF-M06-06SCAD9x1 S-y²
50/125μ OM3	TDF-M06-06SCD50-3x1 S-y²
50/125μ OM4	TDF-M06-06SCD50-4x1 S-y²

FO splice trough module



Description	Part Number
For splicing trough 12 fibers	TDF-M-12SPLICE
For splicing trough 24 fibers	TDF-M-24SPLICE



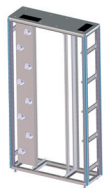
Fan-out near the assembly



Splice table

tDF® Rack System + Accessories

Rack System 19"



Description	Part Number
19"/46U, dismountable, grey	TDF-19/46HE

Side cover for 19" Rack System



Description	Part Number
Side cover	TDF-19/46HE-SIDE

Rear cover for 19" Rack System



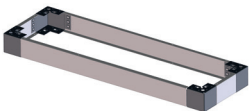
Description	Part Number
Rear cover	TDF-19/46HE-BACK

Door for 19" Rack System



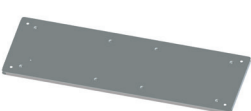
Description	Part Number
Door	TDF-19/46HE-DOOR

Base for 19" Rack System



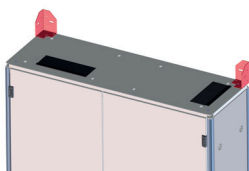
Description	Part Number
Base, multiple parts	TDF-19/46HE-BASE

Roof closed for 19" Rack System



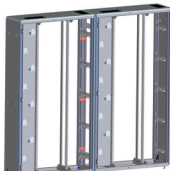
Description	Part Number
Roof closed	TDF-19/46HE-ROOF

Wall mounting set for 19" Rack System



Description	Part Number
Wall mounting set	TDF-19/46HE-WALL-SET

Connector set for 19" Rack System



Description	Part Number
Connector set	TDF-19/46HE-AD-SET

Radii limiter



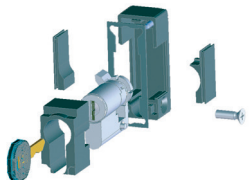
Description	Part Number
5 x Radii limiter	TDF-19/46HE-BEND

Radii limiter cover



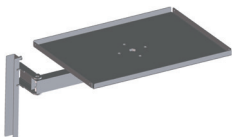
Description	Part Number
10 x radii limiter cover	TDF-19/46HE-BEND-CO

Profile half cylinder



Description	Part Number
Profile half cylinder incl. key	TDF-19/46HE-PHZ

Splice table



Description	Part Number
Splice table	TDF-19/46HE-TABLE

<sup>1</sup> x stands for „P“ = Premium splice module or „ „ for Standard splice module

<sup>2</sup> y stands for „-5“ 5mm Flex tube or „ „ für 6,4mm Flex tube



trans data elektronik GmbH

For 25 years, the internationally successful company tde has specialised in developing and producing scalable cabling systems for highest packing densities. Numerous in-house developments and continuous improvements to the production process have made tde one of the most advanced fiber optics manufactures in Europe. In addition to standard equipment such as polishing machines and interferometers the product range also includes laser cleaver, glue robots and fully-automatic machines to prepare the fibers.

tde plays an active part in the DKE/UK 412.7 standardisation committee (fiber optics connection technology and passive optical components). tde is also represented in the European Committee for Electrotechnical Standardization CENELEC TC 86BXA / WG 01 and the committee of the International Electrotechnical Commission IEC. Since 2014, the network expert has also been involved in the international committee IEC SC 86B.

Situated in Dortmund, Germany, the company's top priority is to guarantee customers the highest possible standards in quality. So as to always ensure this aspiration tde employees use interferometers to inspect every pre-assembled connector for grinding geometry and make sure that no assembled product leaves the production site without inspection record. To ensure the highest standards in quality tde has consistent and systematic quality management system and is certified according to ISO 9001 and ISO 14001. With the TL 9000 quality management system tde was the first German company to receive a special certification for the telecommunications industry in 2002.

#### Renowned customers

Numerous renowned companies place their trust in the network expert's continuous quality assurance, including the prestigious CERN research centre in Switzerland.

Together with CERN engineers tde has realized a customized, highly compact cabling system with multimode op-

tical fibers. The new solution ensures reliable high-speed transmission for future requirements. Thanks to tde's optimized lazer cutting process, the MPO connector offers exeptionally good performance.

This makes the connector attractive for all areas in wich high packing density takes first priority. Due to cuttingedge production processes and highest standards in quality tde ranks among the worldwide leading technology experts in the fields of multi-fibre and twisted pair technology. The network expert provides these fields with suitable solutions. One of the largest projects was the development of a mobile Telco-based cabling system for the German armed forces. For many years, this system has been in use at many military bases including Afghanistan.

It also serves as the basis for the tML®-system: The modular cabling system consist of the three core components module , trunk cable and module rack and is the result of many years of experience and improvement process in the field of copper and fiber optics technology. Just like many other innovations made by tde it is protected by multiple patents.

#### Quality „Made in Germany“

The tde portfolio comprises full system solutions focusing on Plug & Play for high-speed datacom, telecom, industry, medical and defence applications. The network experts's system solutions are exclusively developed, produced and assembled in Germany.

With its very own service department responsible fpr planning and installation tde offers competent services from a single source. As a member of the „European Code of Conduct“ tde is committed to energy efficiency in data centres and with its standardised, flexible and recyclable system components makes an active contribution to green IT. Customer service is provided by qualified employees with a background in distribution and production.

## net. work. solution.

ISO 9001, TL 9000 und ISO 14001 zertifiziert

tde® trans data elektronik GmbH

#### Main address:

Lingener Straße 2, 49626 Bippen/Ohrte  
T +49 5435 9511-0, F +49 5435 9511-32

#### Sales Office:

Prinz-Friedrich-Karl-Str. 46, 44135 Dortmund  
T +49 231 9143-127, F +49 231 9143-129

info@tde.de | www.tde.de

